

Product Datasheet

KRT8 Antibody Cocktail / Cytokeratin 8 (orb248440)

Description

Cytokeratin 8 (CK8) belongs to the type II (or B or


Species/Host

Mouse

Reactivity

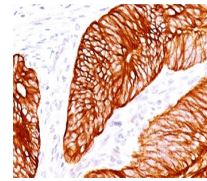
Human, Rat

Conjugation

Unconjugated

Tested Applications

FACS, IF, IHC-P, WB



IHC testing of human colon carcinoma sta...

Immunogen

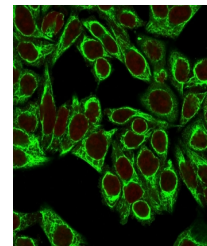
A cytoskeleton preparation containing Cytokeratin 8 (H1) and Keratin preparation from a human carcinoma (TS1) were used as the immunogen for this antibody cocktail.

Preservatives

0.2 mg/ml in 1X PBS with 0.1 mg/ml rAlbumin (US sourced) and 0.05% sodium azide

Storage

Store the Cytokeratin 8 antibody cocktail at 2-8°C (with azide) or aliquot and store at -20°C or colder (without azide).



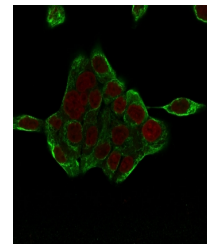
Immunofluorescent staining of permeabili...

Note

For research use only

Application notes

The concentration stated for each application is a general starting point. Variations in protocols, secondaries and substrates may require the antibody to be titered up or down for optimal performance.1. Staining of formalin-fixed tissues requires boiling tissue sections in 10mM Citrate Buffer, pH 6.0, for 10-20 min followed by cooling at RT for 20 minutes.2. The prediluted format is supplied in a dropper bottle and is optimized for use in IHC. After epitope retrieval step (if required), drip mAb solution onto the tissue section and incubate at RT for 30 min.



Immunofluorescent staining of permeabili...

Formula

0.2 mg/ml in 1X PBS with 0.1 mg/ml BSA (US sourced) and 0.05% sodium azide

Isotype

Mouse IgG1, kappa

Clonality

Monoclonal

Purity

Protein G affinity chromatography

Hazard Information

This Cytokeratin 8 antibody is available for research use only.

Entrez

3856

Dilution Range

Flow cytometry: 1-2ug/million cells, Immunofluorescence: 1-2ug/ml, Immunohistochemistry (FFPE): 1-2ug/ml for