

---

## Product Datasheet

### KRT8 Antibody / Cytokeratin 8 (orb248436)

**Description**

Cytokeratin 8 (CK8) belongs to the type II (or B or basic)


**Species/Host**

Mouse

**Reactivity**

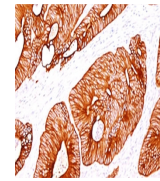
Human

**Conjugation**

Unconjugated

**Tested Applications**

FACS, IF, IHC-P, WB



IHC testing of human colon carcinoma sta...

**Immunogen**

Recombinant human Cytokeratin 8 protein was used as the immunogen for this antibody.

**Preservatives**

0.2 mg/ml in 1X PBS with 0.1 mg/ml rAlbumin (US sourced) and 0.05% sodium azide

**Storage**

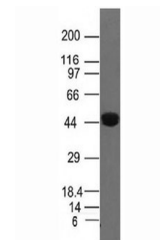
Store the Cytokeratin 8 antibody at 2-8°C (with azide) or aliquot and store at -20°C or colder (without azide).

**Note**

For research use only

**Application notes**

The concentration stated for each application is a general starting point. Variations in protocols, secondaries and substrates may require the antibody to be titered up or down for optimal performance.1. Staining of formalin-fixed tissues requires boiling tissue sections in pH 9 10mM Tris with 1mM EDTA for 10-20 min followed by cooling at RT for 20 minutes.2. The prediluted format is supplied in a dropper bottle and is optimized for use in IHC. After epitope retrieval step (if required), drip mAb solution onto the tissue section and incubate at RT for 30 min.



Western blot analysis of Cytokeratin 8 a...

**Formula**

0.2 mg/ml in 1X PBS with 0.1 mg/ml BSA (US sourced) and 0.05% sodium azide

**Isotype**

Mouse IgG1, kappa

**Clonality**

Monoclonal

**Purity**

Protein G affinity chromatography

**Hazard Information**

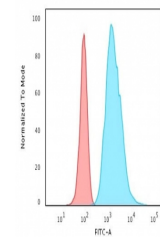
This Cytokeratin 8 antibody is available for research use only.

**Entrez**

[3856](#)

**Dilution Range**

Western blot: 1-2ug/ml,Flow cytometry: 1-2ug/million cells,Immunofluorescence: 1-2ug/ml,Immunohistochemistry (FFPE): 1-2ug/ml for 30 min at RT (1) (2)



Flow cytometry testing of permeabilized h...

**Expiration Date**

12 months from date of receipt.