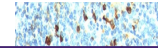

Product Datasheet

Kappa Light Chain Antibody (orb248398)

Description

This antibody is specific to the kappa light chain of


Species/Host

Mouse

Reactivity

Human

Conjugation

Unconjugated

Tested Applications

FACS, IHC-P, WB

Immunogen

Recombinant human Kappa light chain was used as the immunogen for this Kappa antibody.

Preservatives

0.2 mg/ml in 1X PBS with 0.1 mg/ml rAlbumin (US sourced) and 0.05% sodium azide

Storage

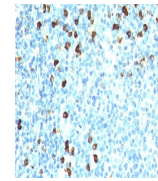
Store the Kappa antibody at 2-8°C (with azide) or aliquot and store at -20°C or colder (without azide).

Note

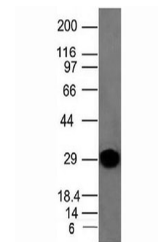
For research use only

Application notes

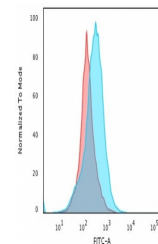
The concentration stated for each application is a general starting point. Variations in protocols, secondaries and substrates may require the Kappa antibody to be titrated up or down for optimal performance.1. Staining of formalin-fixed tissues requires boiling tissue sections in pH 9 10mM Tris with 1mM EDTA for 10-20 min followed by cooling at RT for 20 minutes.2. The prediluted format is supplied in a dropper bottle and is optimized for use in IHC. After epitope retrieval step (if required), drip mAb solution onto the tissue section and incubate at RT for 30 min.



IHC testing of human tonsil stained with...



Western blot analysis of human spleen ti...



Flow cytometry testing of PFA-fixed huma...

Formula

0.2 mg/ml in 1X PBS with 0.1 mg/ml BSA (US sourced) and 0.05% sodium azide

Isotype

Mouse IgG1, kappa

Clonality

Monoclonal

Purity

Protein G affinity chromatography

Hazard Information

This Kappa antibody is available for research use only.

Entrez

[3514](#)

Dilution Range

Western blot: 1-2ug/ml,Flow cytometry: 1-2ug/million cells,Immunohistochemistry (FFPE): 1-2ug/ml for 30 min at RT

Expiration Date

12 months from date of receipt.