

---

## Product Datasheet

### IgM Heavy Chain Antibody (orb248394)

**Description**

This antibody recognizes a protein of 75kDa, identified


**Species/Host**

Mouse

**Reactivity**

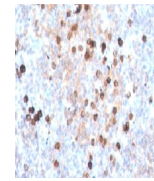
Human

**Conjugation**

Unconjugated

**Tested Applications**

FACS, IF, IHC-P, WB



IHC testing of human tonsil stained with...

**Immunogen**

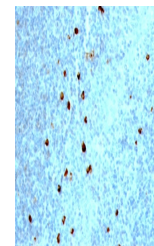
Recombinant heavy chain of human IgM was used as the immunogen for this antibody.

**Preservatives**

0.2 mg/ml in 1X PBS with 0.1 mg/ml rAlbumin (US sourced) and 0.05% sodium azide

**Storage**

Store the IgM heavy chain antibody at 2-8°C (with azide) or aliquot and store at -20°C or colder (without azide).



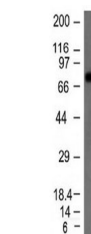
IHC testing of human tonsil stained with...

**Note**

For research use only

**Application notes**

The concentration stated for each application is a general starting point. Variations in protocols, secondaries and substrates may require the antibody to be titrated up or down for optimal performance. 1. Staining of formalin-fixed tissues requires boiling tissue sections in 10mM citrate buffer, pH 6.0, for 10-20 min followed by cooling at RT for 20 minutes. 2. The prediluted format is supplied in a dropper bottle and is optimized for use in IHC. After epitope retrieval step (if required), drip mAb solution onto the tissue section and incubate at RT for 30 min.



Western blot testing of Raji cell lysate...

**Formula**

0.2 mg/ml in 1X PBS with 0.1 mg/ml BSA (US sourced) and 0.05% sodium azide

**Isotype**

Mouse IgG2b, kappa

**Clonality**

Monoclonal

**Purity**

Protein G affinity chromatography

**Hazard Information**

This IgM heavy chain antibody is available for research use only.

**Entrez**

**3507**

**Dilution Range**

Flow cytometry: 0.5-1ug/million cells, Immunofluorescence: 0.5-1ug/ml, Western blot: 0.5-1ug/ml, Immunohistochemistry (FFPE): 0.5-1ug/ml for 30 min at RT

**Expiration Date**

12 months from date of receipt.