
Product Datasheet

IgM Heavy Chain Antibody (orb248392)

Description

IgM is the first antibody generated in an immune


Species/Host

Mouse

Reactivity

Human

Conjugation

Unconjugated

Tested Applications

IHC-P, WB

Immunogen

Recombinant human IgM was used as the immunogen for this anti-IgM antibody.

Preservatives

0.2 mg/ml in 1X PBS with 0.1 mg/ml rAlbumin (US sourced) and 0.05% sodium azide

Storage

Store the anti-IgM antibody at 2-8°C (with azide) or aliquot and store at -20°C or colder (without azide).

Note

For research use only

Application notes

Due to differences in protocols and secondaries, the anti-IgM antibody may need to be titered for optimal performance.1. FFPE staining requires boiling sections in pH 9 10mM Tris with 1mM EDTA for 10-20 min followed by cooling at RT for 20 minutes.2. The prediluted format is supplied in a dropper bottle and is optimized for use in IHC. After epitope retrieval step (if required), drip mAb solution onto the tissue section and incubate at RT for 30 min.

Formula

0.2 mg/ml in 1X PBS with 0.1 mg/ml BSA (US sourced) and 0.05% sodium azide

Isotype

Mouse IgG1, kappa

Clonality

Monoclonal

Purity

Protein G

Hazard Information

This anti-IgM antibody is available for research use only. It is not intended for use in diagnostic or therapeutic applications.

Entrez

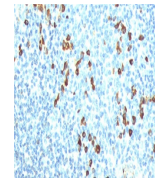
3507

Dilution Range

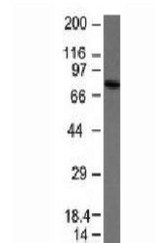
Western blot: 1-2ug/ml, Immunohistochemistry (FFPE): 1-2ug/ml for 30 min at RT

Expiration Date

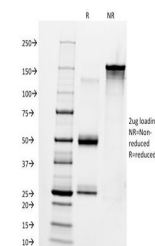
12 months from date of receipt.



IHC testing of human tonsil stained with...



Western blot analysis of anti-IgM antibo...



SDS-PAGE Analysis of Purified, BSA-Free ...