

---

## Product Datasheet

### IgG Heavy Chain Antibody (orb248388)

**Description**

Immunoglobulin gamma (IgG) is the most common class


**Species/Host**

Mouse

**Reactivity**

Human

**Conjugation**

Unconjugated

**Tested Applications**

FACS, IF, IHC-P

**Immunogen**

Purified human IgG heavy chain was used as the immunogen for this anti-IgG antibody.

**Preservatives**

0.2 mg/ml in 1X PBS with 0.1 mg/ml rAlbumin (US sourced) and 0.05% sodium azide

**Storage**

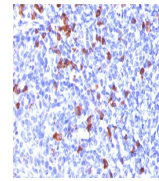
Store the anti-IgG antibody at 2-8°C (with azide) or aliquot and store at -20°C or colder (without azide).

**Note**

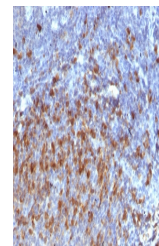
For research use only

**Application notes**

The concentration stated for each application is a general starting point. Variations in protocols, secondaries and substrates may require the anti-IgG antibody to be titered up or down for optimal performance.1. Staining of formalin-fixed tissues requires boiling tissue sections in 10mM citrate buffer, pH 6.0, for 10-20 min followed by cooling at RT for 20 minutes.2. The prediluted format is supplied in a dropper bottle and is optimized for use in IHC. After epitope retrieval step (if required), drip mAb solution onto the tissue section and incubate at RT for 30 min.



IHC testing of human tonsil stained with...



IHC staining of FFPE human tonsil with a...

**Formula**

0.2 mg/ml in 1X PBS with 0.1 mg/ml BSA (US sourced) and 0.05% sodium azide

**Isotype**

Mouse IgG2a, kappa

**Clonality**

Monoclonal

**Purity**

Protein G affinity chromatography

**Hazard Information**

This anti-IgG antibody is available for research use only.

**Entrez**

[3500](#)

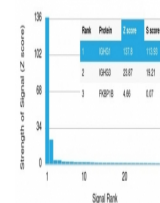
**Dilution Range**

Flow cytometry: 1-2ug/million cells, Immunofluorescence: 1-2ug/ml, Immunohistochemistry (FFPE): 1-2ug/ml for 30 min at RT

**Expiration Date**

12 months from date of receipt.

Human Protein Microarray Specificity Validation



Analysis of HuProt (TM) microarray conta...