
Product Datasheet

Estrogen Receptor beta Antibody (orb248344)

Description

Estrogen receptors (ER) are members of the

ligand-ac...

Species/Host

Mouse

Reactivity

Human, Mouse, Rat

Conjugation

Unconjugated

Tested Applications

FACS, IHC-P, WB

Immunogen

The C-terminus fragment of recombinant human Estrogen Receptor beta protein was used as the immunogen for this antibody.

Preservatives

0.2 mg/ml in 1X PBS with 0.1 mg/ml rAlbumin (US sourced) and 0.05% sodium azide

Storage

Store the Estrogen Receptor antibody at 2-8°C (with azide) or aliquot and store at -20°C or colder (without azide).

Note

For research use only

Application notes

The concentration stated for each application is a general starting point. Variations in protocols, secondaries and substrates may require the Estrogen Receptor beta antibody to be titrated up or down for optimal performance.1. Staining of formalin-fixed tissues requires boiling tissue sections in 10mM citrate buffer, pH 6.0, for 10-20 min followed by cooling at RT for 20 minutes.2. The prediluted format is supplied in a dropper bottle and is optimized for use in IHC. After epitope retrieval step (if required), drip mAb solution onto the tissue section and incubate at RT for 30 min.

Formula

0.2 mg/ml in 1X PBS with 0.1 mg/ml BSA (US sourced) and 0.05% sodium azide

Isotype

Mouse IgG2a, kappa

Clonality

Monoclonal

Purity

Protein G purified monoclonal antibody

Hazard Information

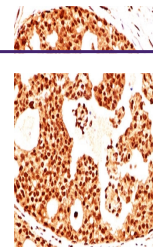
This Estrogen Receptor beta antibody is available for research use only.

Entrez

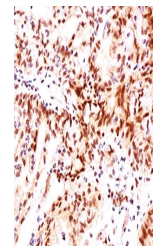
2100

Dilution Range

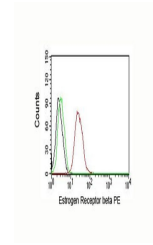
Western blot: 1-2ug/ml, Flow cytometry: 1-2ug/million cells, Immunohistochemistry (FFPE): 1-2ug/ml for 30 min at RT



IHC testing of human breast cancer stain...



IHC testing of human ovarian cancer stain...



FACS testing of human MCF-7 cells: Black...