
Product Datasheet

HER2 Antibody / ErbB2 (orb248335)

Description

This antibody recognizes a protein of 185kDa, which is

Species/Host

Mouse

Reactivity

Human

Conjugation

Unconjugated

Tested Applications

ELISA, FACS, IF

Immunogen

Recombinant human HER2 protein was used as the immunogen for this antibody.(1)

Preservatives

0.2 mg/ml in 1X PBS with 0.1 mg/ml rAlbumin (US sourced) and 0.05% sodium azide

Storage

Store the HER2 ErbB2 antibody at 2-8°C (with azide) or aliquot and store at -20°C or colder (without azide).

Note

For research use only

Application notes

The concentration stated for each application is a general starting point. Variations in protocols, secondaries and substrates may require the antibody to be titrated up or down for optimal performance.1. This HER2 antibody binds to the extracellular/cell surface region of the protein.

Formula

0.2 mg/ml in 1X PBS with 0.1 mg/ml BSA (US sourced) and 0.05% sodium azide

Isotype

Mouse IgG1, kappa

Clonality

Monoclonal

Purity

Protein G affinity chromatography

Hazard Information

This HER2 / ErbB2 antibody is available for research use only.

Entrez

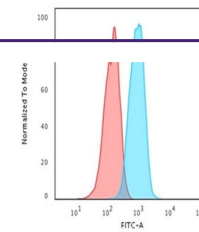
[2064](#)

Dilution Range

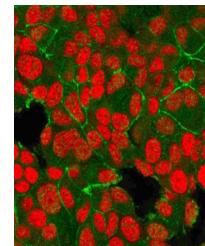
ELISA (order BSA/sodium azide-free format for coating),Flow cytometry: 1-2ug/million cells,Immunofluorescence: 0.5-1ug/ml

Expiration Date

12 months from date of receipt.

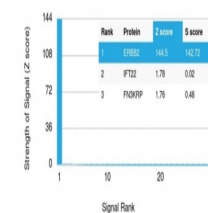


Flow cytometry testing of human MCF7 cel...



Immunofluorescent staining of PFA-fixed ...

Human Protein Microarray Specificity Validation



Analysis of HuProt (TM) microarray conta...