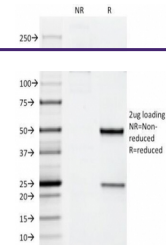

Product Datasheet

HER2 Antibody / ErbB2 (orb248331)

Description

This antibody recognizes a protein of 185kDa, which is



SDS-PAGE
Analysis of
Purified, BSA-
Free ...

Species/Host

Mouse

Reactivity

Human, Rat

Conjugation

Unconjugated

Tested Applications

ELISA, FACS, IF

Immunogen

Recombinant human protein was used as the immunogen for this ErbB2 antibody.(1)

Preservatives

0.2 mg/ml in 1X PBS with 0.1 mg/ml rAlbumin (US sourced) and 0.05% sodium azide

Storage

Store the ErbB2 antibody at 2-8°C (with azide) or aliquot and store at -20°C or colder (without azide).

Note

For research use only

Application notes

Variations in protocols, secondaries and substrates may require the antibody to be titered for optimal performance.1. This ErbB2 antibody binds to the extracellular/cell surface region of the protein.

Formula

0.2 mg/ml in 1X PBS with 0.1 mg/ml BSA (US sourced) and 0.05% sodium azide

Isotype

Mouse IgG2a, kappa

Clonality

Monoclonal

Purity

Protein G purified

Hazard Information

This ErbB2 antibody is available for research use only.

Entrez

[2064](#)

Dilution Range

ELISA (order BSA/sodium azide-free format for coating),Flow cytometry: 0.5-1ug/million cells,Immunofluorescence: 0.5-1ug/ml

Expiration Date

12 months from date of receipt.