
Product Datasheet

CEA Antibody / Carcinoembryonic Antigen (orb248295)

Description

The COL-1 antibody recognizes proteins of 80-200kDa,

Species/Host

Mouse

Reactivity

Human

Conjugation

Unconjugated

Tested Applications

IHC-P, WB

Immunogen

Human colon carcinoma extract was used as the immunogen for this CEA antibody.

Preservatives

0.2 mg/ml in 1X PBS with 0.1 mg/ml rAlbumin (US sourced) and 0.05% sodium azide

Storage

Store the CEA antibody at 2-8°C (with azide) or aliquot and store at -20°C or colder (without azide).

Note

For research use only

Application notes

The concentration stated for each application is a general starting point. Variations in protocols, secondaries and substrates may require the CEA antibody to be titrated up or down for optimal performance.1. Staining of formalin-fixed tissues requires boiling tissue sections in pH 9 10mM Tris with 1mM EDTA for 10-20 min followed by cooling at RT for 20 minutes.2. The prediluted format is supplied in a dropper bottle and is optimized for use in IHC. After epitope retrieval step (if required), drip mAb solution onto the tissue section and incubate at RT for 30 min.

Formula

0.2 mg/ml in 1X PBS with 0.1 mg/ml BSA (US sourced) and 0.05% sodium azide

Isotype

Mouse IgG2a, kappa

Clonality

Monoclonal

Purity

Protein G affinity chromatography

Uniprot ID

P06731

Hazard Information

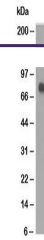
This CEA antibody is available for research use only.

Dilution Range

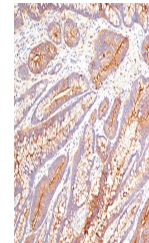
Western blot: 1-2ug/ml, Immunohistochemistry (FFPE): 1-2ug/ml for 30 min at RT (1) (2)

Expiration Date

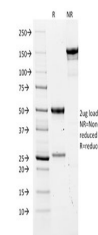
12 months from date of receipt.



Western blot testing of human stomach ly...



IHC testing of FFPE human colon carcinom...



SDS-PAGE analysis of purified, BSA-free ...