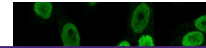

Product Datasheet

Cyclin B1 Antibody / CCNB1 (orb248209)

Description

This antibody recognizes a protein of 55-62kDa,



assoc...

Species/Host

Mouse

Reactivity

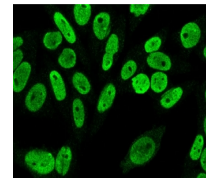
Human, Mouse

Conjugation

Unconjugated

Tested Applications

FACS, IF, IP



Immunofluorescent staining of PFA-fixed ...

Immunogen

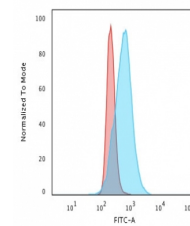
Hamster protein was used as the immunogen for this Cyclin B1 antibody.

Preservatives

0.2 mg/ml in 1X PBS with 0.1 mg/ml rAlbumin (US sourced) and 0.05% sodium azide

Storage

Store the Cyclin B1 antibody at 2-8°C (with azide) or aliquot and store at -20°C or colder (without azide).



Flow cytometry testing of PFA-fixed huma...

Note

For research use only

Application notes

The concentration stated for each application is a general starting point. Variations in protocols, secondaries and substrates may require the antibody to be titrated up or down for optimal performance.

Formula

0.2 mg/ml in 1X PBS with 0.1 mg/ml BSA (US sourced) and 0.05% sodium azide

Isotype

Mouse IgG1, kappa

Clonality

Monoclonal

Purity

Protein G affinity chromatography

Hazard Information

This Cyclin B1 antibody is available for research use only.

Entrez

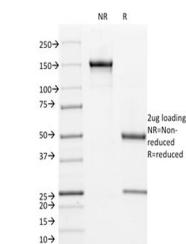
891

Dilution Range

Flow cytometry: 1-2ug/million cells, Immunofluorescence: 1-2ug/ml, Immunoprecipitation: 1-2ug/500ug protein (precipitates active CDK1/cyclin B1 complexes)

Expiration Date

12 months from date of receipt.



SDS-PAGE analysis of purified, BSA-free ...