
Product Datasheet

Cyclin A2 Antibody / CCNA2 (orb248207)

Description

This antibody recognizes a protein of 50-55 kDa, which is

Species/Host

Mouse

Reactivity

Human, Mouse

Conjugation

Unconjugated

Tested Applications

FACS, IF, IHC-P

Immunogen

Full length bovine protein was used as the immunogen for this CCNA2 antibody. The epitope has been localized to amino acids 144-148 of the human protein.

Preservatives

0.2 mg/ml in 1X PBS with 0.1 mg/ml rAlbumin (US sourced) and 0.05% sodium azide

Storage

Store the Cyclin A2 antibody at 2-8°C (with azide) or aliquot and store at -20°C or colder (without azide).

Note

For research use only

Application notes

The concentration stated for each application is a general starting point. Variations in protocols, secondaries and substrates may require the Cyclin A2 antibody to be titrated up or down for optimal performance.

Formula

0.2 mg/ml in 1X PBS with 0.1 mg/ml BSA (US sourced) and 0.05% sodium azide

Isotype

Mouse IgG2a, kappa

Clonality

Monoclonal

Purity

Protein G affinity chromatography

Hazard Information

This Cyclin A2 antibody is available for research use only.

Entrez

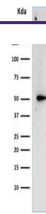
890

Dilution Range

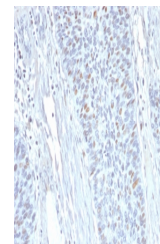
Flow cytometry: 0.5-1ug/million cells, Immunofluorescence: 1-2ug/ml, Immunohistochemistry (FFPE): 1-2ug/ml for 30 min at RT

Expiration Date

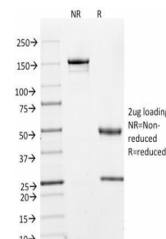
12 months from date of receipt.



Western blot testing of human HeLa cell ...



IHC staining of FFPE human endometrium W...



SDS-PAGE Analysis of Purified, BSA-Free ...