
Product Datasheet

C4d / Complement 4d Antibody (orb248203)

Description

This antibody is specific to Complement 4d (C4d) and it


Species/Host

Mouse

Reactivity

Human

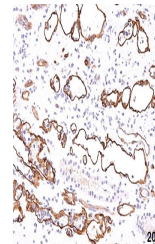
Conjugation

Unconjugated

Tested Applications

ELISA, IHC-P

IHC testing of FFPE human kidney transplanted tissue



IHC testing of FFPE human kidney transplanted tissue

Immunogen

Recombinant human C4d protein was used as the immunogen for this C4d antibody.

Preservatives

0.2 mg/ml in 1X PBS with 0.1 mg/ml rAlbumin (US sourced) and 0.05% sodium azide

Storage

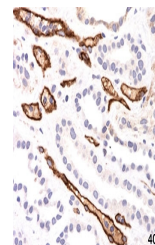
Store the C4d antibody at 2-8°C.

Note

For research use only

Application notes

The concentration stated for each application is a general starting point. Variations in protocols, secondaries and substrates may require the C4d antibody to be titrated up or down for optimal performance.1. Staining of formalin-fixed tissues requires boiling tissue sections in 1mM EDTA, pH 7.5-8.5, for 10-20 min followed by cooling at RT for 20 minutes.2. The prediluted format is supplied in a dropper bottle and is optimized for use in IHC. After epitope retrieval step (if required), drip mAb solution onto the tissue section and incubate at RT for 30 min.



IHC testing of FFPE human kidney transplanted tissue

Formula

0.2 mg/ml in 1X PBS with 0.1 mg/ml BSA (US sourced) and 0.05% sodium azide

Isotype

Mouse IgG1, kappa

Clonality

Monoclonal

Purity

Protein G affinity chromatography

Hazard Information

This C4d antibody is available for research use only.

Entrez

[720](#)

Dilution Range

ELISA: 1-2ug/ml for coating (order BSA/sodium azide-free format),Immunohistochemistry (FFPE): 1-2ug/ml for 30 min at RT

Expiration Date

12 months from date of receipt.