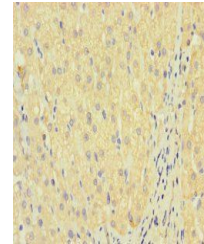


Product Datasheet

LAIR2 antibody (orb24820)

Description	LAIR2 antibody
Species/Host	Rabbit
Reactivity	Human
Conjugation	Unconjugated
Tested Applications	ELISA, IHC
Immunogen	Recombinant Human Leukocyte-associated immunoglobulin-like receptor 2 protein (22-152AA)
Target	LAIR2
Preservatives	Preservative: 0.03% Proclin 300. Constituents: 50% Glycerol
Form/Appearance	Liquid
Storage	Maintain refrigerated at 2-8°C for up to 2 weeks. For long term storage store at -20°C in small aliquots to prevent freeze-thaw cycles.
Note	For research use only
Isotype	IgG
Clonality	Polyclonal
Uniprot ID	Q6ISS4
Dilution Range	IHC-P:1:20-200
Expiration Date	12 months from date of receipt.



Immunohistochemical staining of human li...