
Product Datasheet

Cyclin D1 Antibody / CCND1 (orb248183)

Description

This antibody recognizes a protein of 36kDa, identified as


Species/Host

Mouse

Reactivity

Human, Mouse, Rat

Conjugation

Unconjugated

Tested Applications

FACS, IF, IHC-P, WB

Immunogen

Human recombinant full length protein was used as the immunogen for this Cyclin D1 antibody.

Preservatives

0.2 mg/ml in 1X PBS with 0.1 mg/ml rAlbumin (US sourced) and 0.05% sodium azide

Storage

Store the Cyclin D1 antibody at 2-8°C (with azide) or aliquot and store at -20°C or colder (without azide).

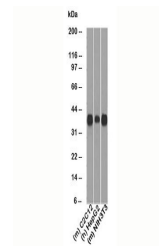
Note

For research use only

Application notes

The concentration stated for each application is a general starting point. Variations in protocols, secondaries and substrates may require the Cyclin D1 antibody to be titrated up or down for optimal performance.1. Staining of formalin-fixed tissues requires boiling tissue sections in 10mM citrate buffer, pH 6.0, for 10-20 min followed by cooling at RT for 20 minutes.2. The prediluted format is supplied in a dropper bottle and is optimized for use in IHC. After epitope retrieval step (if required), drip mAb solution onto the tissue section and incubate at RT for 30 min.

IHC testing of human mantle cell lymphom...



Western blot testing of human and mouse ...

Formula

0.2 mg/ml in 1X PBS with 0.1 mg/ml BSA (US sourced) and 0.05% sodium azide

Isotype

Mouse IgG2a, kappa

Clonality

Monoclonal

Purity

Protein G affinity chromatography

Hazard Information

This Cyclin D1 antibody is available for research use only.

Entrez

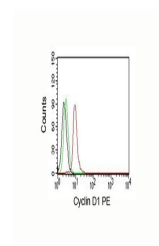
[595](#)

Dilution Range

Flow cytometry: 1-2ug/million cells, Immunofluorescence: 1-2ug/ml, Western blot: 1-2ug/ml, Immunohistochemistry (FFPE): 1-2ug/ml for 30 min at RT

Expiration Date

12 months from date of receipt.



FACS testing of Jurkat cells:
Black=cell...