
Product Datasheet

PSA / Prostate Specific Antigen Antibody (orb248178)

Description

This antibody recognizes a single protein of 33-

Species/Host

Mouse

Reactivity

Human

Conjugation

Unconjugated

Tested Applications

IHC-P

Immunogen

Prostate Specific Antigen from human sperm plasma was used as the antigen for this PSA antibody.

Preservatives

0.2 mg/ml in 1X PBS with 0.1 mg/ml rAlbumin (US sourced) and 0.05% sodium azide

Storage

Store the PSA antibody at 2-8°C (with azide) or aliquot and store at -20°C or colder (without azide).

Note

For research use only

Application notes

The concentration stated for each application is a general starting point. Variations in protocols, secondaries and substrates may require the PSA antibody to be titrated up or down for optimal performance. 1. Staining of formalin-fixed tissues requires boiling tissue sections in 1mM EDTA Buffer, pH 7.5-8.5, for 10-20 min followed by cooling at RT for 20 minutes. 2. The prediluted format is supplied in a dropper bottle and is optimized for use in IHC. After epitope retrieval step (if required), drip mAb solution onto the tissue section and incubate at RT for 30 min.

Formula

0.2 mg/ml in 1X PBS with 0.1 mg/ml BSA (US sourced) and 0.05% sodium azide

Isotype

Mouse IgG1, kappa

Clonality

Monoclonal

Purity

Protein G affinity chromatography

Hazard Information

This PSA antibody is available for research use only.

Entrez

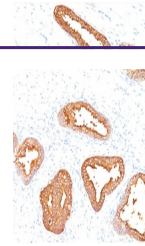
[354](#)

Dilution Range

Immunohistochemistry (FFPE): 1-2ug/ml for 30 min at RT

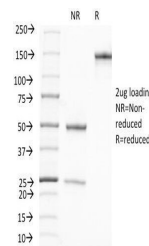
Expiration Date

12 months from date of receipt.



IHC testing of human prostate carcinoma

...



SDS-PAGE Analysis of Purified, BSA-Free ...