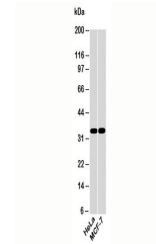


Product Datasheet

EMAP II Antibody (orb248157)

Description	EMAP II (Endothelial monocyte-activating polypeptide 2) is a pro-inflammatory cytokine and participa...
Species/Host	Rabbit
Reactivity	Human, Mouse, Rat
Conjugation	Unconjugated
Tested Applications	WB
Immunogen	A recombinant protein fragment from the C-terminal region of human EMAP II was used as the immunogen for this antibody.
Preservatives	1X PBS, pH 7.4
Storage	Aliquot the antibody and store frozen at -20°C or colder. Avoid repeated freeze-thaw cycles.
Note	For research use only
Application notes	Provided assay concentrations are suggestions only, antibody titration may be required for optimal results.
Formula	0.5 mg/ml with 0.1 mg/ml BSA (US sourced), 0.05% sodium azide
Isotype	Rabbit IgG
Clonality	Polyclonal
Purity	Protein A purified antibody
Uniprot ID	Q12904
Hazard Information	This EMAP II antibody is available for research use only.
Entrez	9255
Dilution Range	Western blot: 2-5ug/ml
Expiration Date	12 months from date of receipt.



Western blot testing of human samples wi...