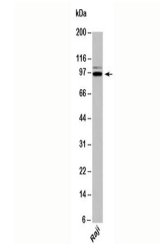


Product Datasheet

TRIL Antibody (orb248138)

| | |
|----------------------------|--|
| Description | TRIL or TLR4 interactor with leucine rich repeats, is a protein encoded by the human KIAA0644 gene. ... |
| Species/Host | Rabbit |
| Reactivity | Human |
| Conjugation | Unconjugated |
| Tested Applications | WB |
| Immunogen | A recombinant protein fragment from the C-terminal region of human TRIL was used as the immunogen for this antibody. |
| Preservatives | 1X PBS, pH 7.4 |
| Storage | Aliquot the antibody and store frozen at -20°C or colder. Avoid repeated freeze-thaw cycles. |
| Note | For research use only |
| Application notes | Provided assay concentrations are suggestions only, antibody titration may be required for optimal results. |
| Formula | 0.5 mg/ml with 0.1 mg/ml BSA (US sourced), 0.05% sodium azide |
| Isotype | Rabbit IgG |
| Clonality | Polyclonal |
| Purity | Protein A affinity chromatography |
| Hazard Information | This TRIL antibody is available for research use only. |
| Entrez | 9865 |
| Dilution Range | Western blot: 2-5ug/ml |
| Expiration Date | 12 months from date of receipt. |



Western blot testing of human samples wi...