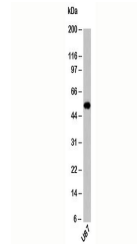


Product Datasheet

Neurotensin Receptor 2 Antibody (orb248133)

Description	Neurotensin is a central nervous system protein involved with the regulation and release of Luteiniz...
Species/Host	Rabbit
Reactivity	Human, Mouse
Conjugation	Unconjugated
Tested Applications	WB
Immunogen	A recombinant protein fragment from the N-terminal half of human Neurotensin Receptor 2 was used as the immunogen for this antibody.
Preservatives	1X PBS, pH 7.4
Storage	Aliquot the Neurotensin Receptor 2 antibody and store frozen at -20°C or colder. Avoid repeated freeze-thaw cycles.
Note	For research use only
Application notes	Provided assay concentrations are suggestions only, Neurotensin Receptor 2 antibody titration may be required for optimal results.
Formula	0.5 mg/ml with 0.1 mg/ml BSA (US sourced), 0.05% sodium azide
Isotype	Rabbit IgG
Clonality	Polyclonal
Purity	Protein A purified antibody
Hazard Information	This Neurotensin Receptor 2 antibody is available for research use only.
Entrez	23620
Dilution Range	Western blot: 1-3ug/ml
Expiration Date	12 months from date of receipt.



Western blot testing of human samples wi...