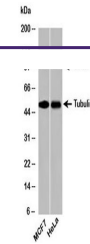

Product Datasheet

Beta Tubulin Antibody Loading Control (orb248111)

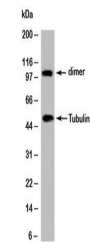
Description

There are five mammalian members of the tubulin

	Hete...
Species/Host	Rabbit
Reactivity	Canine, Human, Mouse, Primate, Rat
Conjugation	Unconjugated
Tested Applications	WB
Immunogen	A recombinant protein fragment from the C-terminal region of human beta tubulin was used as the immunogen for this antibody.
Preservatives	1X PBS, pH 7.4
Storage	Aliquot the loading control antibody and store frozen at -20°C or colder to avoid repeated freeze-thaw cycles.
Note	For research use only
Application notes	Provided assay concentrations are suggestions only, antibody titration may be required for optimal results.
Formula	0.5 mg/ml with 0.1 mg/ml BSA (US sourced), 0.05% sodium azide
Isotype	Rabbit IgG
Clonality	Polyclonal
Purity	Protein A Affinity Chromatography
Hazard Information	This beta Tubulin antibody loading control is available for research use only.
Entrez	203068
Dilution Range	Western blot: 2-4ug/ml
Expiration Date	12 months from date of receipt.



Western blot testing of human samples wi...



Western blot testing of mouse samples wi...