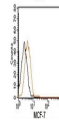
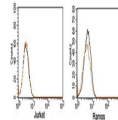


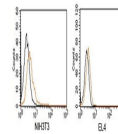
Product Datasheet

Rabbit IgG Isotype Control Polyclonal Antibody PE Conjugate (orb248104)

Description	Isotype control antibodies are negative controls used to measure non-specific binding or background ...
Species/Host	Rabbit
Conjugation	PE
Tested Applications	FACS, IF, IHC
Immunogen	This is purified naive rabbit sera and as such there was no immunogen.
Preservatives	1X PBS, pH 7.4
Form/Appearance	1X PBS, pH 7.4
Storage	Store the Rabbit IgG isotype control antibody at 4°C. Do not freeze; protect from light.
Note	For research use only
Application notes	Generally to be used at the same concentration as the sample being controlled for.
Formula	0.5 mg/ml antibody in PBS with 0.05% sodium azide
Isotype	Rabbit IgG
Clonality	Polyclonal
Purity	Protein A Affinity Chromatography
Hazard Information	This Rabbit IgG isotype control antibody is available for research use only.
Dilution Range	FACS: assay dependent,IHC: assay dependent,IF: assay dependent
Expiration Date	12 months from date of receipt.



FACS testing of Rabbit IgG isotype contr...



FACS testing of Rabbit IgG isotype contr...