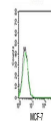
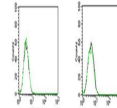


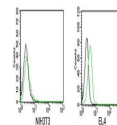
Product Datasheet

Rabbit IgG Isotype Control Polyclonal Antibody FITC Conjugate (orb248103)

Description	Isotype control antibodies are negative controls used to measure non-specific binding or background ...
Species/Host	Rabbit
Conjugation	FITC
Tested Applications	FACS, IF, IHC
Immunogen	This is purified naive rabbit sera and as such there was no immunogen.
Preservatives	1X PBS, pH 7.4
Storage	Store the Rabbit IgG isotype control antibody at 4°C. Do not freeze; protect from light.
Note	For research use only
Application notes	Generally to be used at the same concentration as the sample being controlled for.
Formula	0.5 mg/ml antibody in PBS with 0.05% sodium azide
Isotype	Rabbit IgG
Clonality	Polyclonal
Purity	Protein A Affinity Chromatography
Hazard Information	This rabbit isotype control antibody is available for research use only.
Dilution Range	FACS: assay dependent,IHC: assay dependent,IF: assay dependent
Expiration Date	12 months from date of receipt.



FACS testing of Rabbit IgG isotype contr...



FACS testing of Rabbit IgG isotype contr...