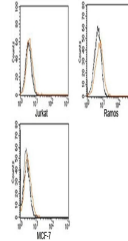


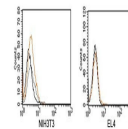
## Product Datasheet

# Rabbit Isotype Control Polyclonal Antibody (orb248101)

<b>Description</b>	Isotype control antibodies are negative controls used to measure non-specific binding or background ...
<b>Species/Host</b>	Rabbit
<b>Conjugation</b>	Unconjugated
<b>Tested Applications</b>	FACS, IF, IHC
<b>Immunogen</b>	This is purified naive rabbit sera and as such there was no immunogen.
<b>Preservatives</b>	1X PBS, pH 7.4
<b>Storage</b>	Aliquot the rabbit antibody and store frozen at -20°C or colder to avoid repeated freeze-thaw cycles.
<b>Note</b>	For research use only
<b>Application notes</b>	Generally to be used at the same concentration as the sample being controlled for.
<b>Formula</b>	0.5 mg/ml antibody in PBS with 0.05% sodium azide
<b>Isotype</b>	Rabbit IgG
<b>Clonality</b>	Polyclonal
<b>Purity</b>	Protein A purified IgG fraction
<b>Hazard Information</b>	This Rabbit isotype control antibody is available for research use only.
<b>Dilution Range</b>	FACS: assay dependent, IHC: assay dependent, IF: assay dependent
<b>Expiration Date</b>	12 months from date of receipt.



FACS testing of Rabbit IgG isotype contr...



FACS testing of Rabbit IgG isotype contr...