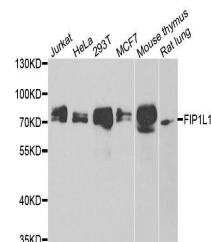


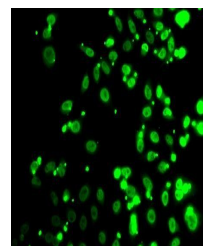
Product Datasheet

FIP1L1 antibody (orb247826)

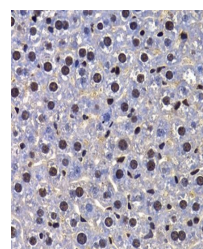
Description	Rabbit polyclonal antibody to FIP1L1
Reactivity	Human, Mouse, Rat
Conjugation	Unconjugated
Tested Applications	ICC, IF, IHC, WB
Immunogen	Recombinant fusion protein of human FIP1L1(NP_001128409.1).
Preservatives	PBS with 0.02% sodium azide,50% glycerol,pH7.3.
Concentration	1 mg/ml
Storage	Maintain refrigerated at 2-8°C for up to 2 weeks. For long term storage store at -20°C in small aliquots to prevent freeze-thaw cycles.
Note	For research use only
Isotype	IgG
Clonality	Polyclonal
MW	80kDa
Uniprot ID	Q6UN15
Dilution Range	WB: 1:500-2000, IHC-P: 1:50-200, IF/ICC: 1:50-100
Expiration Date	12 months from date of receipt.



Western blot analysis of extracts of var...



Immunofluorescence analysis of A549 cell...



Immunohistochemical staining of mouse li...