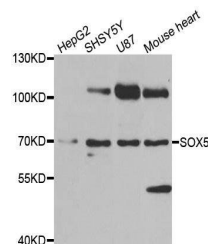


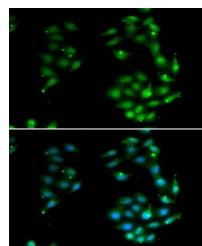
Product Datasheet

SOX5 antibody (orb247722)

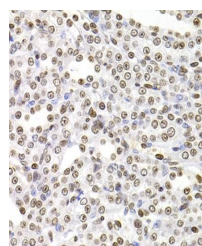
Description	Rabbit polyclonal antibody to SOX5
Reactivity	Human, Mouse, Rat
Conjugation	Unconjugated
Tested Applications	ICC, IF, IHC, WB
Immunogen	A synthetic peptide of human SOX5(NP_008871.3).
Preservatives	PBS with 0.05% proclin300,50% glycerol,pH7.3.
Concentration	1 mg/ml
Storage	Store at -20°C. Avoid freeze / thaw cycles.
Note	For research use only
Isotype	IgG
Clonality	Polyclonal
MW	84KDa
Uniprot ID	P35711
Dilution Range	WB: 1:500-2000, IHC-P: 1:50-200, IF/ICC: 1:50-100
Expiration Date	12 months from date of receipt.



Western blot analysis of extracts of var...



Immunofluorescence analysis of U2OS cell...



Immunohistochemical staining of rat kidn...