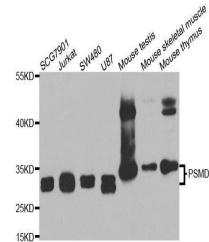


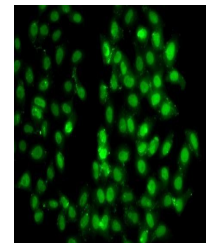
Product Datasheet

PSMD8 antibody (orb247706)

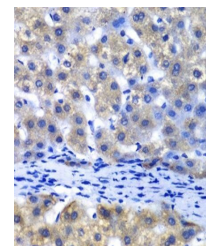
| | |
|----------------------------|-----------------------------------------------------------------------------------------------------------------------------------------|
| Description | Rabbit polyclonal antibody to PSMD8 |
| Reactivity | Human, Mouse, Rat |
| Conjugation | Unconjugated |
| Tested Applications | ICC, IF, WB |
| Immunogen | Recombinant fusion protein of human PSMD8(NP_002803.2). |
| Preservatives | PBS with 0.02% sodium azide, 50% glycerol, pH 7.3. |
| Concentration | 1 mg/ml |
| Storage | Maintain refrigerated at 2-8°C for up to 2 weeks. For long term storage store at -20°C in small aliquots to prevent freeze-thaw cycles. |
| Note | For research use only |
| Isotype | IgG |
| Clonality | Polyclonal |
| MW | 30-35kDa |
| Uniprot ID | P48556 |
| Dilution Range | WB: 1:500-2000, IHC-P: 1:50-200, IF/ICC: 1:50-100 |
| Expiration Date | 12 months from date of receipt. |



Western blot analysis of extracts of var...



Immunofluorescence analysis of U2OS cell...



Immunohistochemical staining of human li...