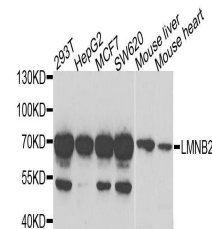


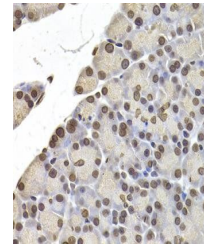
## Product Datasheet

### LMNB2 antibody (orb247464)

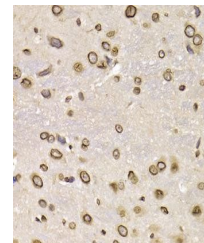
|                            |                                                                                                                                         |
|----------------------------|-----------------------------------------------------------------------------------------------------------------------------------------|
| <b>Description</b>         | Rabbit polyclonal antibody to LMNB2                                                                                                     |
| <b>Reactivity</b>          | Human, Mouse, Rat                                                                                                                       |
| <b>Conjugation</b>         | Unconjugated                                                                                                                            |
| <b>Tested Applications</b> | ICC, IF, IHC, WB                                                                                                                        |
| <b>Immunogen</b>           | Recombinant fusion protein of human Lamin B2(NP_116126.3).                                                                              |
| <b>Preservatives</b>       | PBS with 0.02% sodium azide,50% glycerol,pH7.3.                                                                                         |
| <b>Concentration</b>       | 1 mg/ml                                                                                                                                 |
| <b>Storage</b>             | Maintain refrigerated at 2-8°C for up to 2 weeks. For long term storage store at -20°C in small aliquots to prevent freeze-thaw cycles. |
| <b>Note</b>                | For research use only                                                                                                                   |
| <b>Isotype</b>             | IgG                                                                                                                                     |
| <b>Clonality</b>           | Polyclonal                                                                                                                              |
| <b>MW</b>                  | 70kDa                                                                                                                                   |
| <b>Uniprot ID</b>          | <a href="#">Q03252</a>                                                                                                                  |
| <b>Dilution Range</b>      | WB: 1:500-2000, IHC-P: 1:50-200, IF/ICC: 1:50-100                                                                                       |
| <b>Expiration Date</b>     | 12 months from date of receipt.                                                                                                         |



Western blot analysis of extracts of var...



Immunohistochemical staining of rat brai...



Immunohistochemical staining of rat panc...