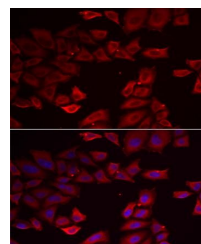


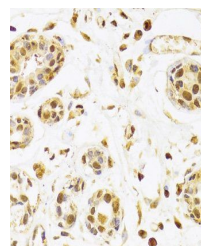
Product Datasheet

SEPHS1 antibody (orb247449)

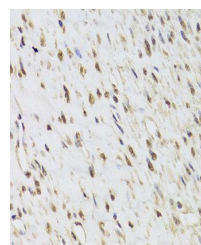
Description	Rabbit polyclonal antibody to SEPHS1
Reactivity	Human, Rat
Conjugation	Unconjugated
Tested Applications	ICC, IF, IHC, WB
Immunogen	Recombinant fusion protein of human SEPHS1(NP_036379.2).
Preservatives	PBS with 0.02% sodium azide,50% glycerol,pH7.3.
Concentration	1 mg/ml
Storage	Maintain refrigerated at 2-8°C for up to 2 weeks. For long term storage store at -20°C in small aliquots to prevent freeze-thaw cycles.
Note	For research use only
Isotype	IgG
Clonality	Polyclonal
MW	43kDa
Uniprot ID	P49903
Dilution Range	WB: 1:500-2000, IHC-P: 1:50-200, IF/ICC: 1:10-100
Expiration Date	12 months from date of receipt.



Immunofluorescence analysis of HeLa cell...



Immunohistochemistry of paraffin-embedde...



Immunohistochemistry of paraffin-embedde...