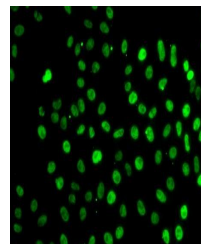


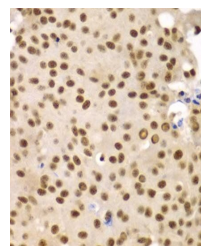
Product Datasheet

SF3B2 antibody (orb247263)

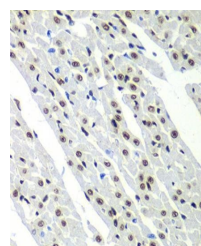
Description	Rabbit polyclonal antibody to SF3B2
Reactivity	Human, Mouse, Rat
Conjugation	Unconjugated
Tested Applications	ICC, IF, IHC, WB
Immunogen	Recombinant fusion protein of human SF3B2(NP_006833.2).
Preservatives	PBS with 0.02% sodium azide,50% glycerol,pH7.3.
Concentration	1 mg/ml
Storage	Store at -20°C. Avoid freeze / thaw cycles.
Note	For research use only
Isotype	IgG
Clonality	Polyclonal
MW	140kDa
Uniprot ID	Q13435
Dilution Range	WB: 1:500-2000, IHC-P: 1:50-200, IF/ICC: 1:50-200
Expiration Date	12 months from date of receipt.



Immunofluorescence analysis of MCF7 cell...



Immunohistochemical staining of rat live...



Immunohistochemical staining of rat kidn...