

## Product Datasheet

### OPG antibody (orb247239)

**Description**

OPG antibody

**Species/Host**

Rabbit

**Reactivity**

Bovine, Canine, Human, Mouse, Rat

**Conjugation**

Unconjugated

**Tested**

ELISA, ICC, IF, IHC-P, WB

**Applications**
**Immunogen**

KLH conjugated synthetic peptide derived from human OPG. Please contact us for the exact immunogen sequence. The peptide is available as orb12899.

**Target**

OPG

**Form/Appearance**

10 mM PBS, 0.02% sodium azide

**Concentration**

- 100 µg (in 200 µl): 0.5 mg/ml- 200 µg (in 400 µl): 0.5 mg/ml

**Storage**

Store at 4°C for short term. For long term storage, aliquot and store at -20°C, avoid freeze/thaw cycles.

**Note**

For research use only

**Isotype**

IgG

**Clonality**

Polyclonal

**Purity**

Purified by Protein A affinity chromatography.

**MW**

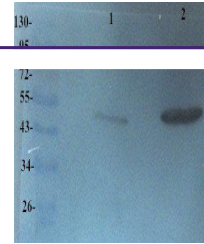
43 kDa

**Uniprot ID**
**000300**
**NCBI**
**002546, 002537, 31**
**Entrez**
**4982**
**Dilution Range**

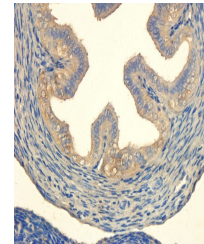
WB: 1:100-500, IHC-P: 1:100-500 (based on 0.5 mg/ml)

**Expiration Date**

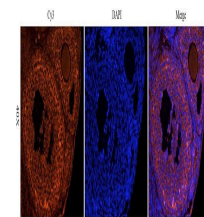
12 months from date of receipt.



Western blot analysis of Rat heart (Lane...



Immunohistochemical staining of paraffin...



IF image of mouse ovary tissue using OPG...