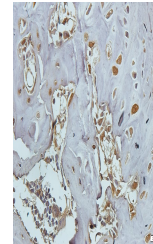


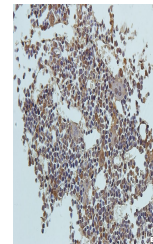
Product Datasheet

Antigen KI-67 antibody (orb247042)

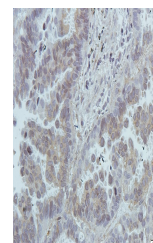
| | |
|----------------------------|---|
| Description | Antigen KI-67 antibody |
| Species/Host | Rabbit |
| Conjugation | Unconjugated |
| Tested Applications | IHC-P, WB |
| Immunogen | KLH conjugated synthetic peptide derived from human Antigen KI-67. Please contact us for the exact immunogen sequence. |
| Target | Antigen KI-67 |
| Form/Appearance | 10 mM PBS, 0.02% sodium azide, 10 mg/ml rAlbumin |
| Storage | After reconstitution store at 4°C.for up to two weeks. For long term storage, aliquot and store at -20°C. Avoid freeze/thaw cycles. |
| Note | For research use only |
| Isotype | IgG |
| Clonality | Polyclonal |
| Purity | Polyclonal antibodies are purified by peptide affinity chromatography |
| MW | 55kDa |
| Uniprot ID | P46013 |
| Dilution Range | IHC-P: 1:50-1:500 |
| Expiration Date | 12 months from date of receipt. |



IHC-P staining of guinea pig bone marrow...



IHC-P staining of guinea pig bone marrow...



IHC-P staining of human lung cancer tiss...