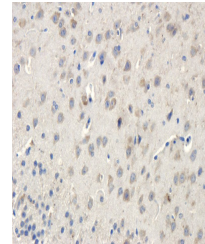


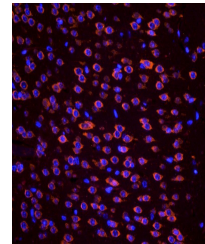
Product Datasheet

Apelin antibody (orb247041)

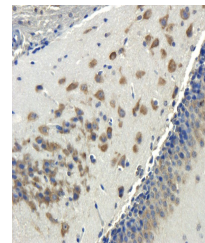
Description	Apelin antibody
Species/Host	Rabbit
Reactivity	Human, Mouse, Rat
Conjugation	Unconjugated
Tested Applications	ELISA, ICC, IF, IHC-P
Immunogen	KLH conjugated synthetic peptide derived from human Apelin. Please contact us for the exact immunogen sequence. The peptide is available as orb374850.
Target	Apelin
Form/Appearance	10 mM PBS, 0.02% sodium azide
Concentration	- 100 µg (in 200 µl): 0.5 mg/ml- 200 µg (in 400 µl): 0.5 mg/ml
Storage	Store at 4°C for short term. For long term storage, aliquot and store at -20°C, avoid freeze/thaw cycles.
Note	For research use only
Isotype	IgG
Clonality	Polyclonal
Purity	Affinity purified
MW	10 kDa
Uniprot ID	Q9ULZ1 , Q9R0R3 , Q9R0R4
NCBI	017413 , 059109 , 31 , 41
Entrez	8862
Dilution Range	IF/ICC: 1:200, IHC-P: 1:200
Expiration Date	12 months from date of receipt.



Immunohistochemical staining of paraffin...



IF analysis of mouse brain tissue using ...



Immunohistochemical staining of mouse br...