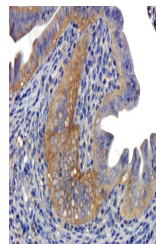


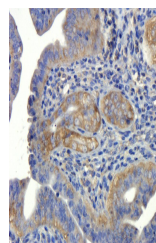
Product Datasheet

NOX1 antibody (orb247040)

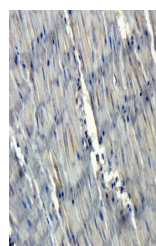
Description	NOX1 antibody
Species/Host	Rabbit
Reactivity	Human, Mouse, Porcine, Rat
Conjugation	Unconjugated
Tested Applications	ELISA, ICC, IF, IHC-P
Immunogen	KLH conjugated synthetic peptide derived from human NOX1. Please contact us for the exact immunogen sequence. The peptide is available as orb374849.
Target	NOX1
Form/Appearance	10 mM PBS, 0.02% sodium azide
Concentration	- 100 µg (in 200 µl): 0.5 mg/ml- 200 µg (in 400 µl): 0.5 mg/ml
Storage	Store at 4°C for short term. For long term storage, aliquot and store at -20°C, avoid freeze/thaw cycles.
Note	For research use only
Isotype	IgG
Clonality	Polyclonal
Purity	Affinity purified
MW	62 kDa
Uniprot ID	Q9WV87 , Q9Y5S8 , Q8CIZ9
NCBI	001258744 , 11 , 001271815
Entrez	27035
Dilution Range	IF/ICC: 1:200, IHC-P: 1:200
Expiration Date	12 months from date of receipt.



IHC-P image of pig uterus tissue using a...



IHC-P staining of mouse uterus tissue us...



IHC-P image of pig uterus tissue using a...