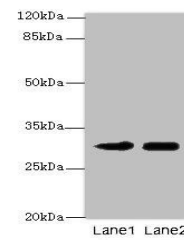


Product Datasheet

ITM2A antibody (orb24697)

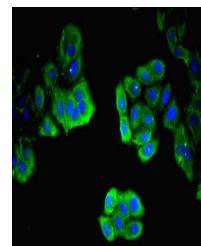
Description	ITM2A antibody
Species/Host	Rabbit
Reactivity	Human
Conjugation	Unconjugated
Tested Applications	ELISA, IF, IHC, WB
Immunogen	Recombinant Human Integral membrane protein 2A protein (79-263AA)
Target	ITM2A
Preservatives	Preservative: 0.03% Proclin 300. Constituents: 50% Glycerol
Form/Appearance	Liquid
Storage	Maintain refrigerated at 2-8°C for up to 2 weeks. For long term storage store at -20°C in small aliquots to prevent freeze-thaw cycles.
Note	For research use only
Isotype	IgG
Clonality	Polyclonal
Uniprot ID	O43736
Dilution Range	WB:1:500-2000, IHC-P:1:20-200, IF:1:50-200
Expiration Date	12 months from date of receipt.



Western blot analysis of HL60(lane 1), S...



Immunohistochemical staining of human to...



Immunofluorescence analysis of HepG2 cel...