

## Product Datasheet

### Human RRM1 protein (orb246431)

**Description**

Ribonucleoside-diphosphate reductase large subunit is an enzyme that


**Endotoxins**

Not test.

**Preservatives**

If the delivery form is liquid, the default storage buffer is Tris/PBS-based buffer, 5%-50% glycerol. If the delivery form is lyophilized powder, the buffer before lyophilization is Tris/PBS-based buffer, 6% Trehalose, pH 8.0.

**Form/Appearance**

Liquid or Lyophilized powder

**Storage**

The shelf life is related to many factors, storage state, buffer ingredients, storage temperature and the stability of the protein itself. Generally, the shelf life of liquid form is 6 months at -20°C/-80°C. The shelf life of lyophilized form is 12 months at -20°C/-80°C.

**Tag**

N-terminal 6xHis-SUMO-tagged

**Note**

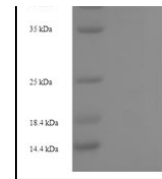
For research use only

**Application notes**

Full length of His-SUMO-tag and expression region is 1-792aa

**Protein Sequence**

MHVIKRDGRQERVMFDKITSRIQKLCYGLNMDFVDPAQITMKVIQGLYSGVTTVE  
 LDTLAAETAATLTTKHPDYAILAARIAVSNLHKETKKVFSDVMEDLYNYINPHNGK  
 HSPMVAKSTLDIVLANKDRLNSAIYDRDFSINYFGFKTLERSYLLKINGKVAERP  
 QHMLMRVSVGIHKEDIDAAIETYNLLSERWFTHASPTLFNAGTNRPQLSSCFLLS  
 MKDDESGIYDYLKQCALISKSAGGIGVAVSCIRATGSYIAGTNGNSNGLVPMPLRV  
 YNNTARYVDQGGNKRPGAFIYLEPWHLDFEFDLKKNKGKEEQRRARDLFFAL  
 WIPDLFMKRVETNQDWSLMCPNECPGLDEVWGEEFEKLYASYEKQGRVRKVVK  
 AQLWYAIIESQTETGTPYMLYKDCSNRKSQQNLGTIKCSNLCTEIVEYTSKDE  
 VAVCNLASLALNMYVTSEHTYDFKKLAEVTKVVVRNLNKIIDINYPVPEACLSNK  
 RHRPIGIGVQGLADAFILMRYPFESAEAQLLNKQIFETIYYGALEASCDLAKEQGPY  
 ETYEGSPVSKGILQYDMWNVPTDLWDWVKLKEKIAGYKIRNSLLIAPMPTASTA  
 QILGNNESIEPYTSNIYTRRVLGSEFQIVNPHLLKDLTERGLWHEEMKNQIIACNG  
 SIQSIPEIPDDLKQLYKTVWEISQKTVLMAAERGAFIDQSQSLNIHIAEPNYGKLT  
 SMHFYGWKQGLKTGMYYLRTRPAANPIQFTLNKEKLDKEKVSKEEEEKERNTA  
 AMVCSLENRDECLMCGS



SDS-PAGE analysis of Tris-Glycine gel us...

**Purity**

Greater than 90% as determined by SDS-PAGE.

**Source**

E.coli

**MW**

106.1 kDa

**Uniprot ID**

[P23921](#)

**Expiration Date**

6 months from date of receipt.