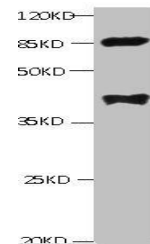


Product Datasheet

LP-PLA2 antibody (orb243886)

Description	LP-PLA2 antibody
Species/Host	Mouse
Reactivity	Human, Mouse
Conjugation	Unconjugated
Tested Applications	ELISA, IHC, WB
Immunogen	Recombinant LP-PLA2 Protein
Target	PLA2G7
Preservatives	Preservative: 0.03% Proclin 300. Constituents: 50% Glycerol
Form/Appearance	liquid
Storage	Maintain refrigerated at 2-8°C for up to 2 weeks. For long term storage store at -20°C in small aliquots to prevent freeze-thaw cycles.
Note	For research use only
Isotype	IgG1
Clonality	Monoclonal
Uniprot ID	Q13093
Dilution Range	Recommended dilution:WB:1:500-1:5000,IHC-P:1:50-1:500
Expiration Date	12 months from date of receipt.



Western blot analysis of mouse spleen ti...