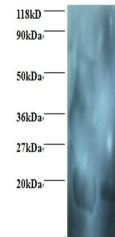


Product Datasheet

milk beta-Lactoglobulin antibody (Biotin) (orb243819)

Description	milk beta-Lactoglobulin antibody (Biotin)
Species/Host	Rabbit
Reactivity	Bovine
Conjugation	Biotin
Tested Applications	ELISA
Immunogen	Bovine milk Beta-lactoglobulin (Native Protein)
Target	LGB
Preservatives	Preservative: 0.03% Proclin 300. Constituents: 50% Glycerol
Form/Appearance	Liquid
Storage	Upon receipt, store at -20°C or -80°C. Avoid repeated freeze.
Note	For research use only
Isotype	IgG
Clonality	Polyclonal
Uniprot ID	P02754
Dilution Range	ELISA
Expiration Date	12 months from date of receipt.



Western blot analysis of (Lane 1): Bovin...