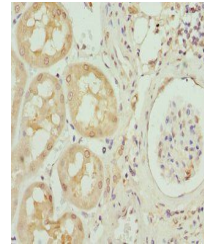


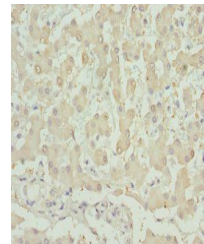
Product Datasheet

Inhibin beta B chain antibody (orb243758)

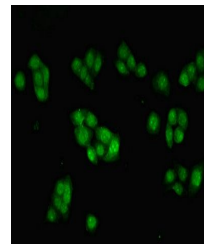
| | |
|----------------------------|---|
| Description | Inhibin beta B chain antibody |
| Species/Host | Rabbit |
| Reactivity | Human |
| Conjugation | Unconjugated |
| Tested Applications | ELISA, IF, IHC, WB |
| Immunogen | Recombinant Human Inhibin beta B chain protein (295-405AA) |
| Target | INHBB |
| Preservatives | Preservative: 0.03% Proclin 300. Constituents: 50% Glycerol |
| Form/Appearance | Liquid |
| Storage | Maintain refrigerated at 2-8°C for up to 2 weeks. For long term storage store at -20°C in small aliquots to prevent freeze-thaw cycles. |
| Note | For research use only |
| Isotype | IgG |
| Clonality | Polyclonal |
| Uniprot ID | P09529 |
| Dilution Range | WB:1:500-1:2000, IHC-P:1:20-1:200, IF/ICC:1:50-1:200 |
| Expiration Date | 12 months from date of receipt. |



Immunohistochemical staining of human kidney tissue.



Immunohistochemical staining of human liver tissue.



Immunofluorescence analysis of PC-3 cells.