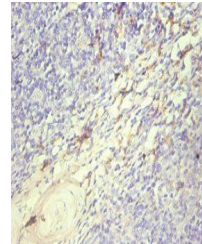


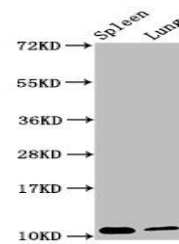
Product Datasheet

Protein S100A8 antibody (orb243526)

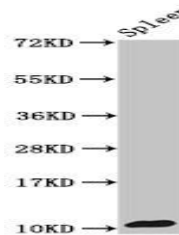
Description	Protein S100A8 antibody
Species/Host	Rabbit
Reactivity	Mouse
Conjugation	Unconjugated
Tested Applications	ELISA, WB
Immunogen	Recombinant Mouse Protein S100-A8 protein (2-89AA)
Target	S100a8
Preservatives	Preservative: 0.03% Proclin 300. Constituents: 50% Glycerol
Form/Appearance	Liquid
Storage	Upon receipt, store at -20°C or -80°C. Avoid repeated freeze.
Note	For research use only
Isotype	IgG
Clonality	Polyclonal
Uniprot ID	P27005
Dilution Range	WB:1:500-5000, IHC-P:1:50-500
Expiration Date	12 months from date of receipt.



Immunohistochemical staining of human to...



Western blot analysis of Mouse spleen ti...



Western blot analysis of Mouse spleen ti...