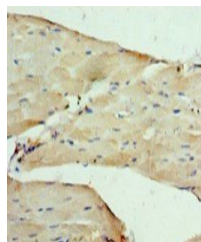


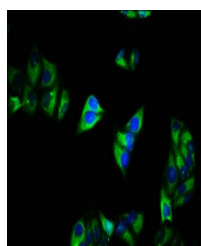
Product Datasheet

Voltage-dependent calcium channel subunit alpha-2/delta-1 antibody (orb243387)

Description	Voltage-dependent calcium channel subunit alpha-2/delta-1 antibody
Species/Host	Rabbit
Reactivity	Human
Conjugation	Unconjugated
Tested Applications	ELISA, IF, IHC
Immunogen	Recombinant Human Voltage-dependent calcium channel subunit alpha-2/delta-1 protein (577-717AA)
Target	CACNA2D1
Preservatives	Preservative: 0.03% Proclin 300. Constituents: 50% Glycerol
Form/Appearance	Liquid
Storage	Upon receipt, store at -20°C or -80°C. Avoid repeated freeze.
Note	For research use only
Isotype	IgG
Clonality	Polyclonal
Uniprot ID	P54289
Dilution Range	IHC-P:1:20-200, IF:1:50-200
Expiration Date	12 months from date of receipt.



Immunohistochemical staining of human sk...



Immunofluorescence analysis of HeLa cell...