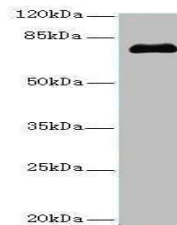


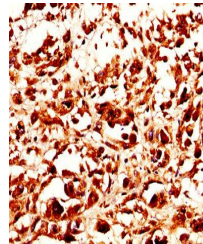
## Product Datasheet

### Melanocyte protein PMEL antibody (orb242996)

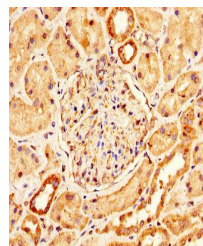
<b>Description</b>	Melanocyte protein PMEL antibody
<b>Species/Host</b>	Rabbit
<b>Reactivity</b>	Human
<b>Conjugation</b>	Unconjugated
<b>Tested Applications</b>	ELISA, IHC, WB
<b>Immunogen</b>	Recombinant Human Melanocyte protein PMEL protein (25-467AA)
<b>Target</b>	PMEL
<b>Preservatives</b>	Preservative: 0.03% Proclin 300. Constituents: 50% Glycerol
<b>Form/Appearance</b>	Liquid
<b>Storage</b>	Upon receipt, store at -20°C or -80°C. Avoid repeated freeze.
<b>Note</b>	For research use only
<b>Isotype</b>	IgG
<b>Clonality</b>	Polyclonal
<b>Uniprot ID</b>	<b>P40967</b>
<b>Dilution Range</b>	WB:1:1000-1:5000, IHC-P:1:200-1:500
<b>Expiration Date</b>	12 months from date of receipt.



Western blot analysis of Jurkat whole ce...



Immunohistochemical staining of human me...



Immunohistochemical staining of human ki...