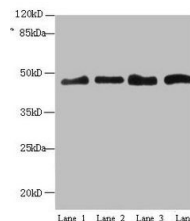


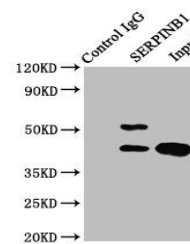
Product Datasheet

Leukocyte elastase inhibitor antibody (orb242972)

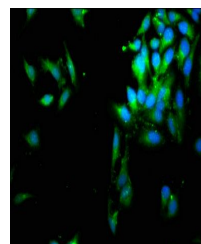
Description	Leukocyte elastase inhibitor antibody
Species/Host	Rabbit
Reactivity	Human
Conjugation	Unconjugated
Tested Applications	ELISA, IF, IHC, IP, WB
Immunogen	Recombinant Human Leukocyte elastase inhibitor protein (1-379AA)
Target	SERPINB1
Preservatives	Preservative: 0.03% Proclin 300. Constituents: 50% Glycerol
Form/Appearance	Liquid
Storage	Maintain refrigerated at 2-8°C for up to 2 weeks. For long term storage store at -20°C in small aliquots to prevent freeze-thaw cycles.
Note	For research use only
Isotype	IgG
Clonality	Polyclonal
Uniprot ID	P30740
Dilution Range	WB:1:500-1:5000, IHC-P:1:200-1:500, IF:1:50-1:200, IP:1:200-1:2000
Expiration Date	12 months from date of receipt.



Western blot analysis of HepG2(Lane 1), ...



Immunoprecipitation analysis of HepG2 wh...



Immunofluorescence analysis of HeLa cell...