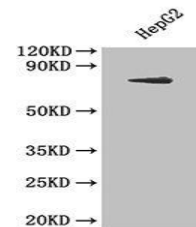


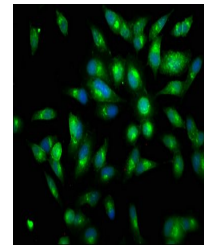
Product Datasheet

lactoferrin antibody (orb242967)

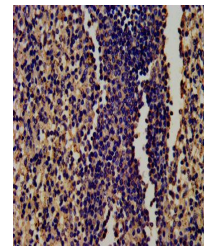
Description	lactoferrin antibody
Species/Host	Rabbit
Reactivity	Human
Conjugation	Unconjugated
Tested Applications	ELISA, IF, IHC
Immunogen	Human Lactotransferrin protein (Native Protein)
Target	LTF
Preservatives	Preservative: 0.03% Proclin 300. Constituents: 50% Glycerol
Form/Appearance	Liquid
Storage	Maintain refrigerated at 2-8°C for up to 2 weeks. For long term storage store at -20°C in small aliquots to prevent freeze-thaw cycles.
Note	For research use only
Isotype	IgG
Clonality	Polyclonal
Uniprot ID	P02788
Dilution Range	IHC-P:1:100-500, IF:1:50-500
Expiration Date	12 months from date of receipt.



Western blot analysis of human hepG2 cells using lactoferrin antibody.



Immunofluorescence analysis of HeLa cells using lactoferrin antibody.



Immunohistochemical staining of human tissue using lactoferrin antibody.