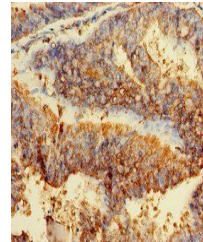


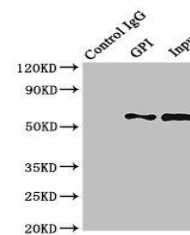
Product Datasheet

Glucose-6-phosphate isomerase antibody (orb241627)

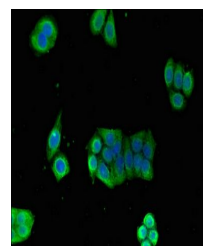
Description	Glucose-6-phosphate isomerase antibody
Species/Host	Rabbit
Reactivity	Human, Mouse
Conjugation	Unconjugated
Tested Applications	ELISA, IF, IHC, IP, WB
Immunogen	Recombinant Human Glucose-6-phosphate isomerase protein (2-554AA)
Target	GPI
Preservatives	Preservative: 0.03% Proclin 300. Constituents: 50% Glycerol
Form/Appearance	Liquid
Storage	Maintain refrigerated at 2-8°C for up to 2 weeks. For long term storage store at -20°C in small aliquots to prevent freeze-thaw cycles.
Note	For research use only
Isotype	IgG
Clonality	Polyclonal
Uniprot ID	P06744
Dilution Range	WB:1:500-5000, IHC-P:1:20-200, IF:1:50-200, IP:1:200-2000
Expiration Date	12 months from date of receipt.



Immunohistochemical staining of human en...



Immunoprecipitation analysis of Hela who...



Immunofluorescence analysis of PC-3 cell...