

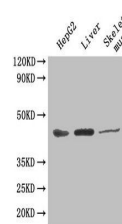
Product Datasheet

Aspartate aminotransferase, cytoplasmic antibody (orb241515)

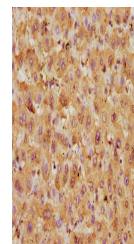
Description	Aspartate aminotransferase, cytoplasmic antibody
Species/Host	Rabbit
Reactivity	Human, Mouse
Conjugation	Unconjugated
Tested Applications	ELISA, IF, IHC, WB
Immunogen	Recombinant Human Aspartate aminotransferase, cytoplasmic protein (2-411AA)
Target	GOT1
Preservatives	Preservative: 0.03% Proclin 300. Constituents: 50% Glycerol
Form/Appearance	Liquid
Storage	Maintain refrigerated at 2-8°C for up to 2 weeks. For long term storage store at -20°C in small aliquots to prevent freeze-thaw cycles.
Note	For research use only
Isotype	IgG
Clonality	Polyclonal
Uniprot ID	P17174
Dilution Range	WB:1:500-2000, IHC-P:1:20-500, IF:1:50-200
Expiration Date	12 months from date of receipt.



Western blot analysis of mouse brain tis...



cytoplasmic antibody



Western blot analysis of hepG2 cell