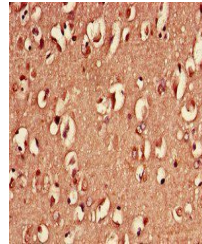


Product Datasheet

14-3-3 protein eta antibody (Biotin) (orb241456)

Description	14-3-3 protein eta antibody (Biotin)
Species/Host	Rabbit
Reactivity	Human
Conjugation	Biotin
Tested Applications	ELISA, IHC
Immunogen	Recombinant Human 14-3-3 protein eta protein (4-246AA)
Target	YWHAH
Preservatives	Preservative: 0.03% Proclin 300. Constituents: 50% Glycerol
Form/Appearance	Liquid
Storage	Upon receipt, store at -20°C or -80°C. Avoid repeated freeze.
Note	For research use only
Isotype	IgG
Clonality	Polyclonal
Uniprot ID	Q04917
Dilution Range	IHC-P:1:20-1:200
Expiration Date	12 months from date of receipt.



Immunohistochemical staining of human br...