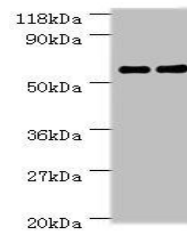


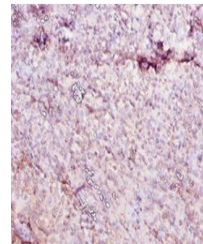
Product Datasheet

Carboxylesterase 1C antibody (orb240866)

Description	Carboxylesterase 1C antibody
Species/Host	Rabbit
Reactivity	Human, Mouse, Rat
Conjugation	Unconjugated
Tested Applications	ELISA, IHC, WB
Immunogen	Recombinant Mouse Carboxylesterase 1C protein (19-550AA)
Target	Ces1c
Preservatives	Preservative: 0.03% Proclin 300. Constituents: 50% Glycerol
Form/Appearance	Liquid
Storage	Maintain refrigerated at 2-8°C for up to 2 weeks. For long term storage store at -20°C in small aliquots to prevent freeze-thaw cycles.
Note	For research use only
Isotype	IgG
Clonality	Polyclonal
Uniprot ID	P23953
Dilution Range	WB:1:1000-1:5000, IHC-P:1:10-1:200
Expiration Date	12 months from date of receipt.



Western blot analysis of mouse liver(Lan...



Immunohistochemical staining of human to...