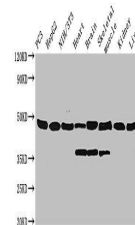


Product Datasheet

Alpha-enolase antibody (HRP) (orb240813)

Description	Alpha-enolase antibody (HRP)
Species/Host	Rabbit
Reactivity	Human, Mouse, Rat
Conjugation	HRP
Tested Applications	ELISA, WB
Immunogen	Recombinant Mouse Alpha-enolase protein (2-433AA)
Target	Eno1
Preservatives	Preservative: 0.03% Proclin 300. Constituents: 50% Glycerol
Form/Appearance	Liquid
Storage	Upon receipt, store at -20°C or -80°C. Avoid repeated freeze.
Note	For research use only
Isotype	IgG
Clonality	Polyclonal
Uniprot ID	P17182
Dilution Range	WB:1:500-5000
Expiration Date	12 months from date of receipt.



Western blot analysis of PC3(Lane 1), He...