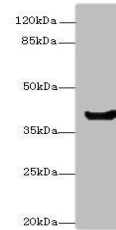


Product Datasheet

Mannose-6-phosphate isomerase antibody (orb240604)

Description	Mannose-6-phosphate isomerase antibody
Species/Host	Rabbit
Reactivity	E. coli
Conjugation	Unconjugated
Tested Applications	ELISA, WB
Immunogen	Recombinant Escherichia coli Mannose-6-phosphate isomerase protein (1-391AA)
Target	manA
Preservatives	Preservative: 0.03% Proclin 300. Constituents: 50% Glycerol
Form/Appearance	Liquid
Storage	Maintain refrigerated at 2-8°C for up to 2 weeks. For long term storage store at -20°C in small aliquots to prevent freeze-thaw cycles.
Note	For research use only
Isotype	IgG
Clonality	Polyclonal
Uniprot ID	P00946
Expiration Date	12 months from date of receipt.



Western blot analysis of DH5 alpha whole...