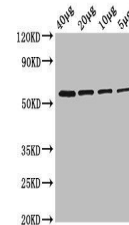


Product Datasheet

Glycerol kinase antibody (Biotin) (orb240597)

Description	Glycerol kinase antibody (Biotin)
Species/Host	Rabbit
Reactivity	E. coli
Conjugation	Biotin
Tested Applications	ELISA, WB
Immunogen	Recombinant Escherichia coli Glycerol kinase protein (2-502AA)
Target	glpK
Preservatives	Preservative: 0.03% Proclin 300. Constituents: 50% Glycerol
Form/Appearance	Liquid
Storage	Upon receipt, store at -20°C or -80°C. Avoid repeated freeze.
Note	For research use only
Isotype	IgG
Clonality	Polyclonal
Uniprot ID	P0A6F3
Expiration Date	12 months from date of receipt.



Western blot analysis of Rosseta bacteri...